

63

BEMERKUNG:

ANZAHL:

2

MELDERART:



automatische Melder

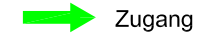
MELDERORT:

Lager, Erdgeschoss

MELDERGRUPPE:

63

Legende



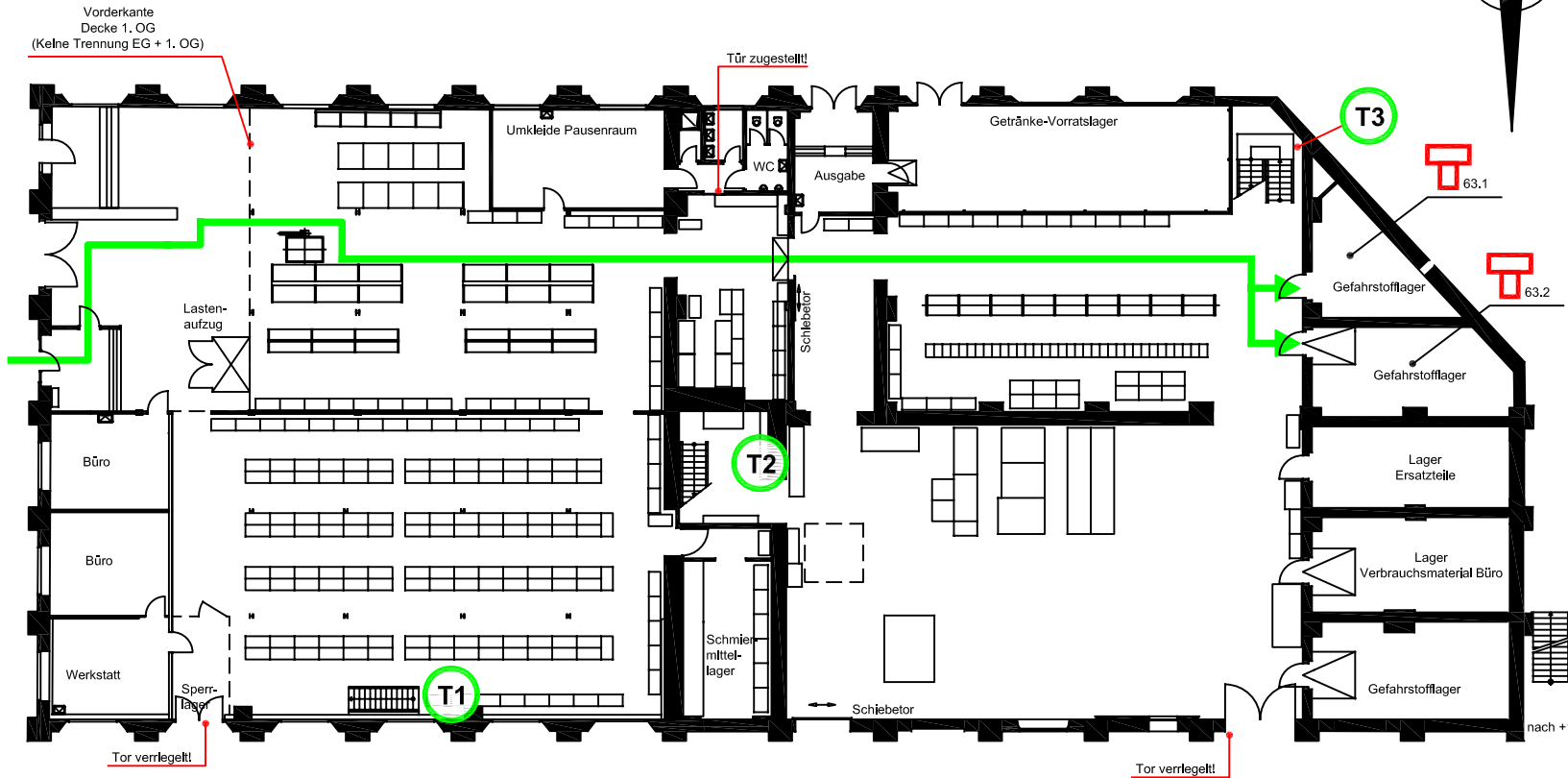
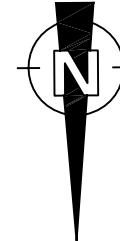
Zugang



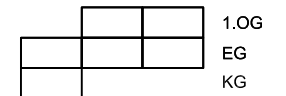
Einsatzweg



automatischer Melder



T1 T2 T3



Datum: 1/2008

Meldergruppenplan  
BRANDMELDEANLAGE

Objekt: Fa. Mustermann GmbH  
Musterstraße 1  
12345 Musterstadt

Ersteller:



BRANTEC GmbH  
Wingersheide 39  
51427 Bergisch Gladbach

63

MELDER-  
GRUPPE